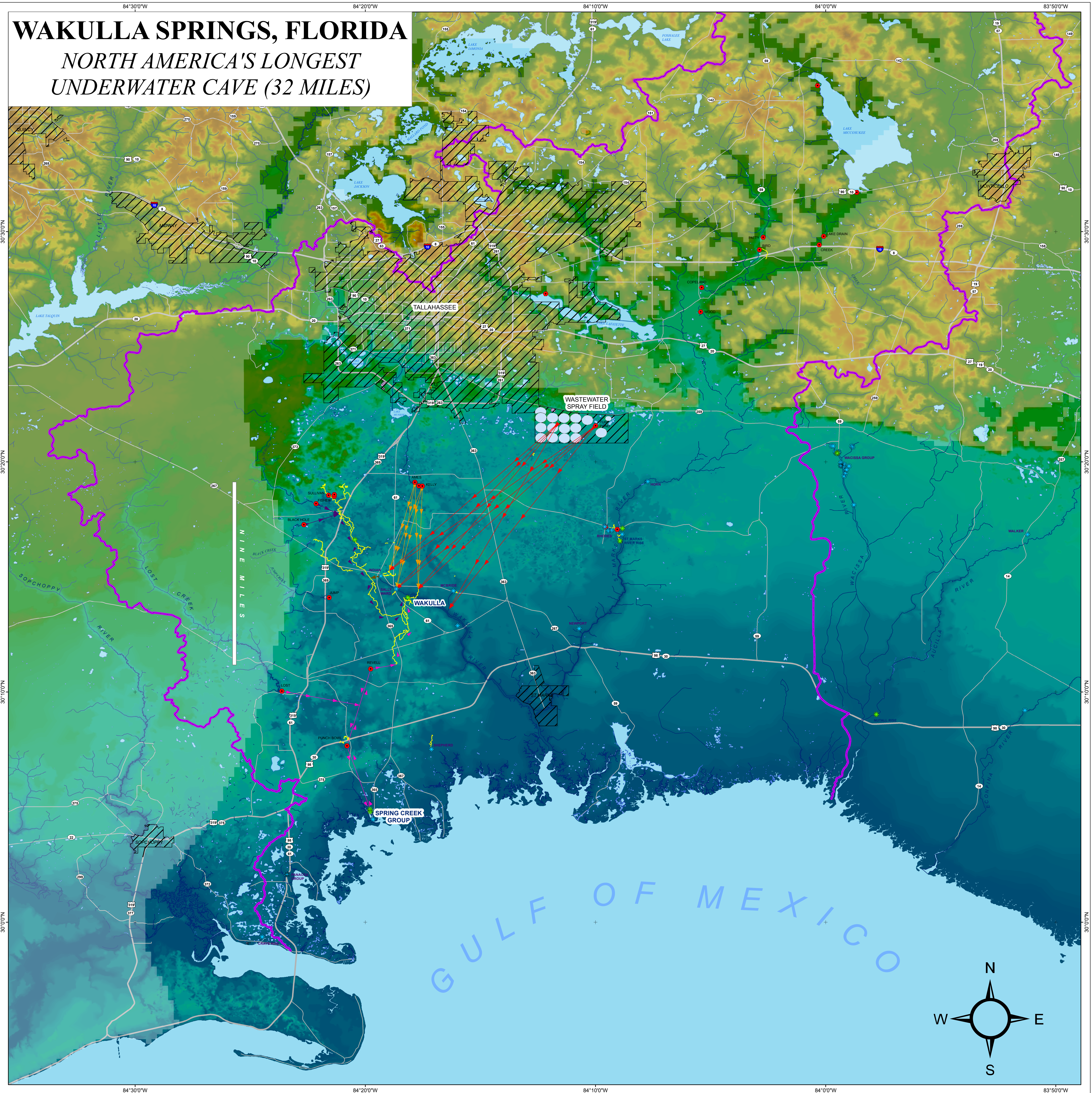


WAKULLA SPRINGS, FLORIDA

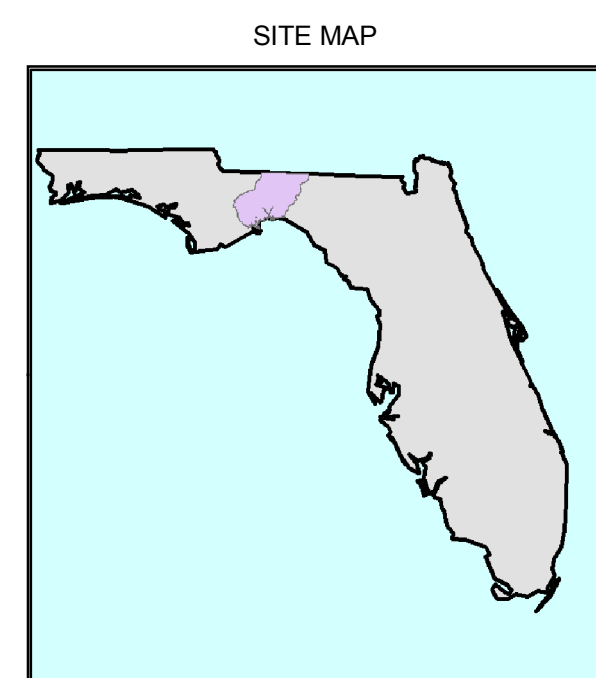
NORTH AMERICA'S LONGEST UNDERWATER CAVE (32 MILES)



KARST & HYDROLOGIC FEATURES TRACE PATHWAYS

- 1ST MAG SPRINGS
 - 2ND - 4TH MAG SPRINGS
 - SWALLETS
 - SURVEYED CONDUITS
46.6 Total Miles
 - RIVERS
 - WAKULLA & ST MARKS RIVERS DRAINAGE DIVIDE
 - LAKES & PONDS
 - RESERVOIR
 - AMES SINK
 - BLACK & FISHER CREEKS
 - INDIAN SPRINGS
 - LOST CREEK
 - TALLHASSEE SPRAYFIELD & TURF POND
- GEOLOGY**
MAP SHOWS REGIONS WHERE THE FLORIDIAN AQUIFER IS CONFINED AND UNCONFINED. AREAS WHERE THE TOPOGRAPHY IS MUTED (WEST & NORTH) REPRESENT WHERE THE FLORIDIAN IS COVERED BY AT LEAST A 10FT THICKNESS OF THE INTERMEDIATE CONFINING UNIT (ICU). THE ICU CONSISTS OF MIOCENE AND PIOCENE CLAYEY SAND AND SANDY CLAY.

HYDROLOGIC FEATURES OF THE WOODVILLE KARST PLAIN WAKULLA RIVER DRAINAGE BASIN NORTHWEST FLORIDA



SCALE 1 : 100,000



FOR MORE INFORMATIONS PLEASE VISIT:
www.hydrogeologyconsortium.org
www.geohydros.com

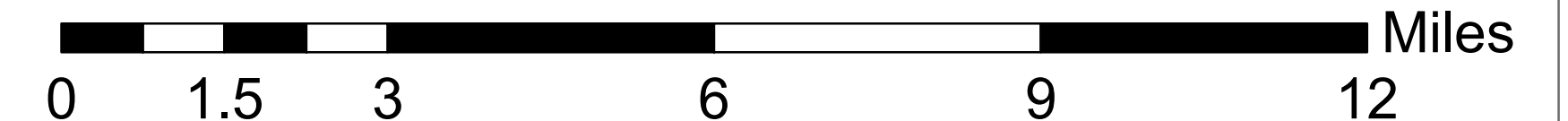
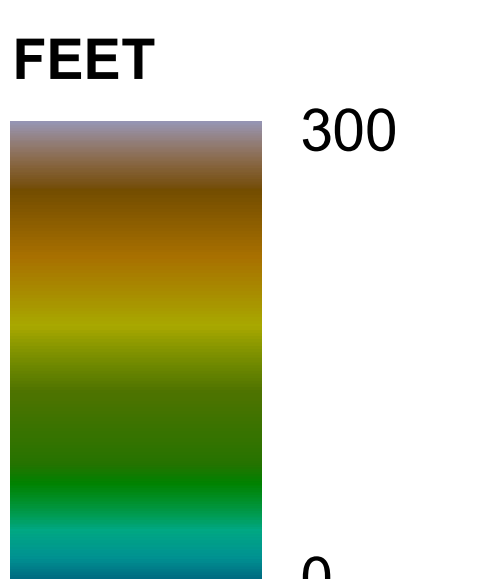
CONTRIBUTORS



POLITICAL FEATURES

- INTERSTATE ROUTE
- US ROUTE
- STATE & COUNTY ROUTE
- TALLHASSEE SPRAYFIELD CENTER PIVOTS
- MUNICIPAL BOUNDARY

ELEVATION



MAP PROJECTION: WGS 1984 MAP CREATED: MARCH 18, 2011